

Media Player Codec Pack Installation Guide

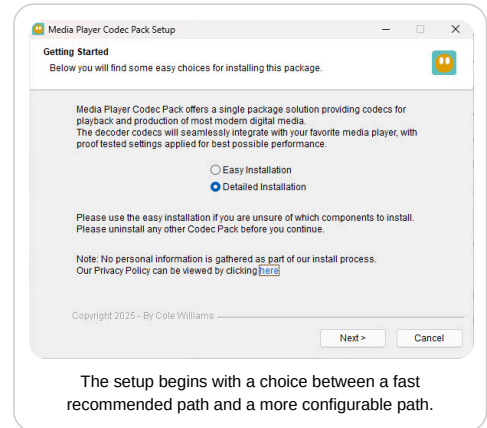
[Download Installation Guide \(PDF\)](#)

Follow this walkthrough from the moment the download finishes through to the final setup screen. It explains what the installer shows, what each main step does, and what the optional Detailed Installation screens are for.

- ✓ Covers Easy Installation and Detailed Installation
- ✓ Explains component selection, hardware detection, and audio output options
- ✓ Focused on the installation process itself

Guide length: about 5 minutes

Applies to: Windows 10 and 11



Before you start

The installer is designed to make setup clear and guided. It presents the main installation choices up front, discloses the components that can be installed, offers to remove an older version of itself when applicable, and uses conflict blocking logic to help avoid software conflicts and incompatible user selections.

Easy Installation is intended for most users and skips the extra video and audio configuration pages.

[Windows 10 and 11 file association guide](#)

Detailed Installation gives more visibility into component selection and shows the video and audio settings screens.

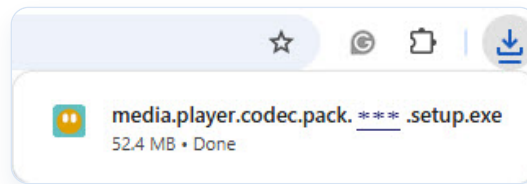
Hardware-aware defaults are applied after checking the system CPU, GPU, and codec support limits.

Step-by-step installation walkthrough

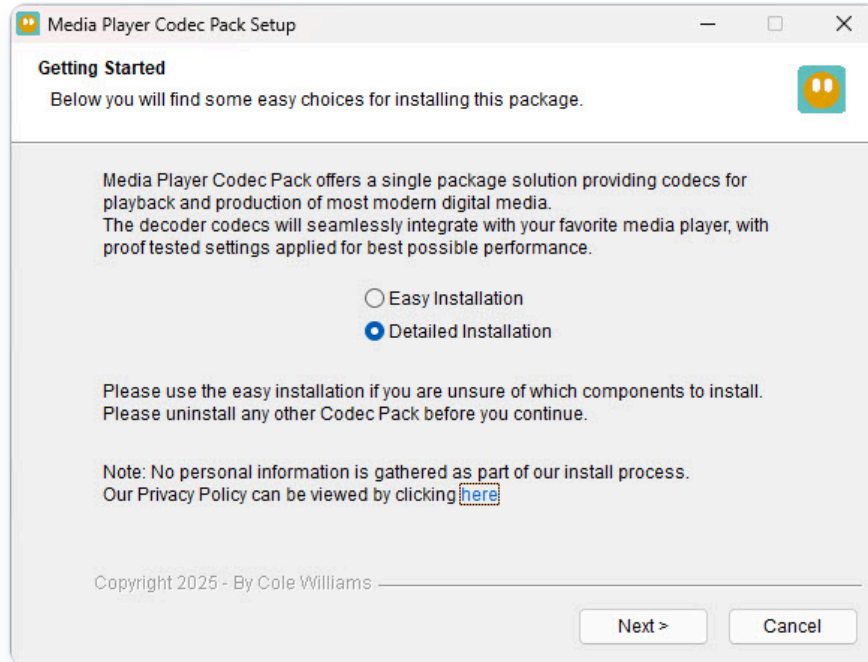
The sequence below follows the screenshots from download completion through to the finished installer screen. The Easy Installation path is shorter, while the Detailed Installation path includes the extra video and audio settings pages.

Step 1 Open the downloaded setup file

Once the download has finished, open the setup file to begin installation.



The Getting Started screen offers two setup paths. **Easy Installation** is the recommended fast path for most users. **Detailed Installation** is for users who want to review more settings during setup.

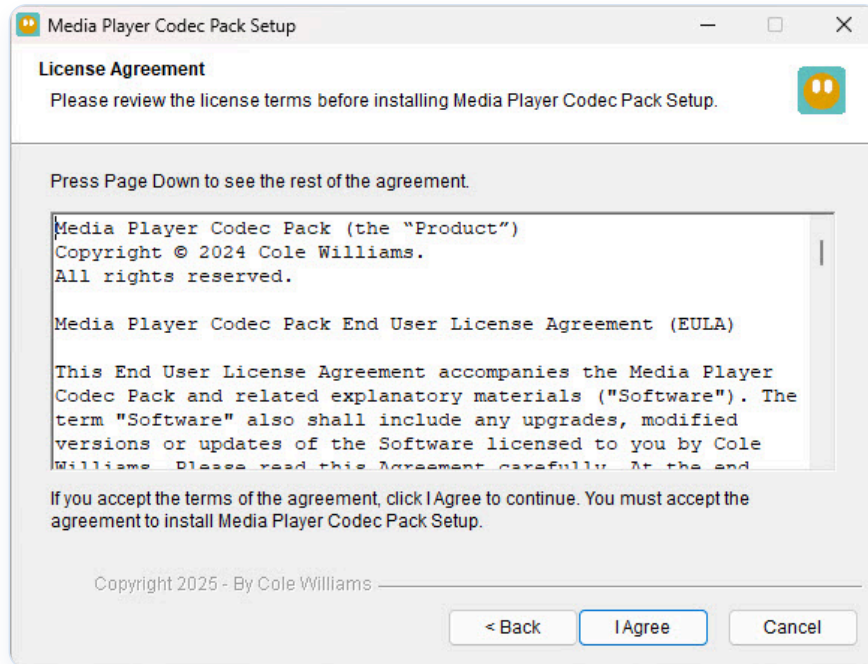


What changes between them? Easy Installation follows a simpler flow and does not show the extra GPU or audio output configuration pages. Detailed Installation includes those pages.

Step 3

Review and accept the license agreement

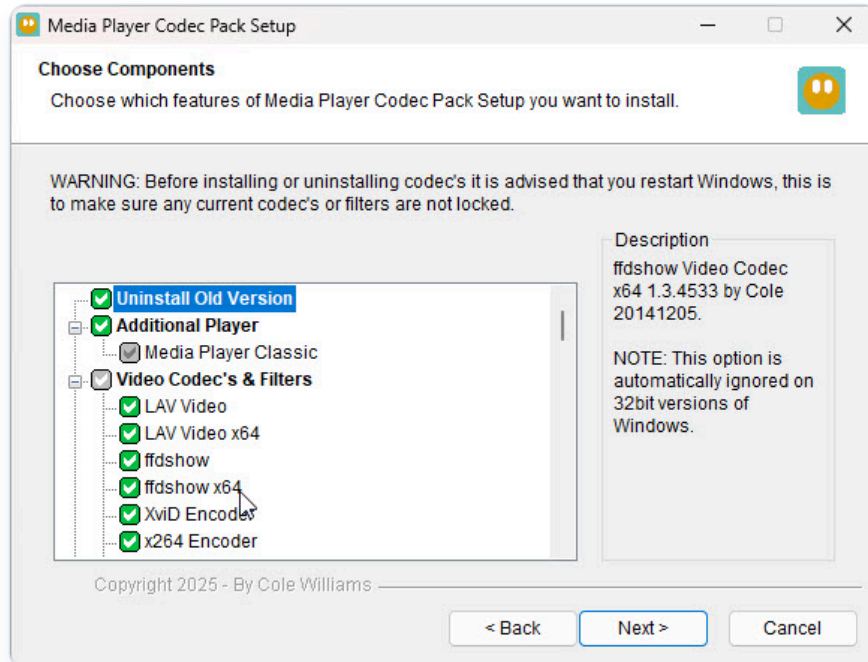
Read the license agreement, then click **I Agree** to continue.



Step 4

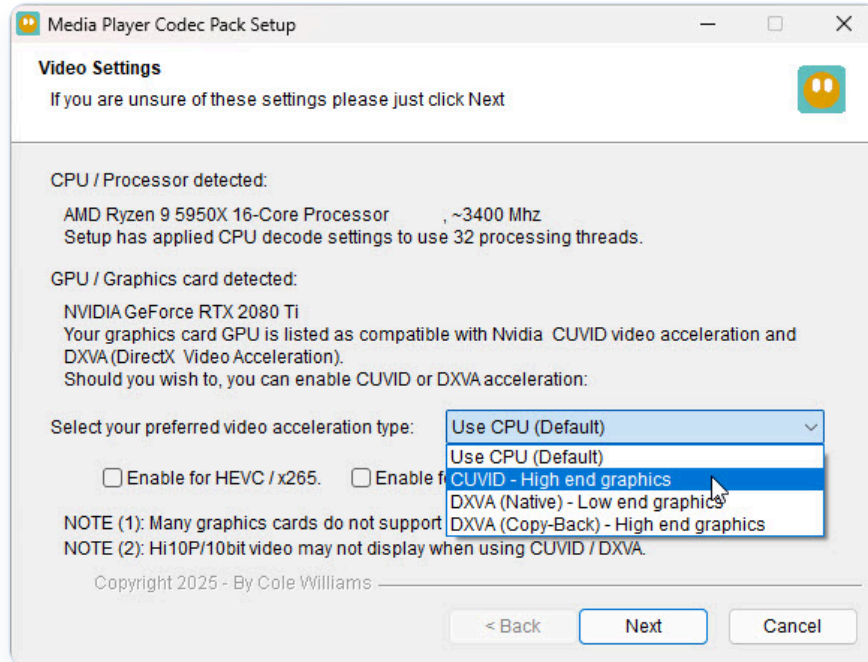
Review the component selection list

The installer shows which features and filters are selected for installation. It can also offer to uninstall an older version of itself first, helping to keep the setup clean.



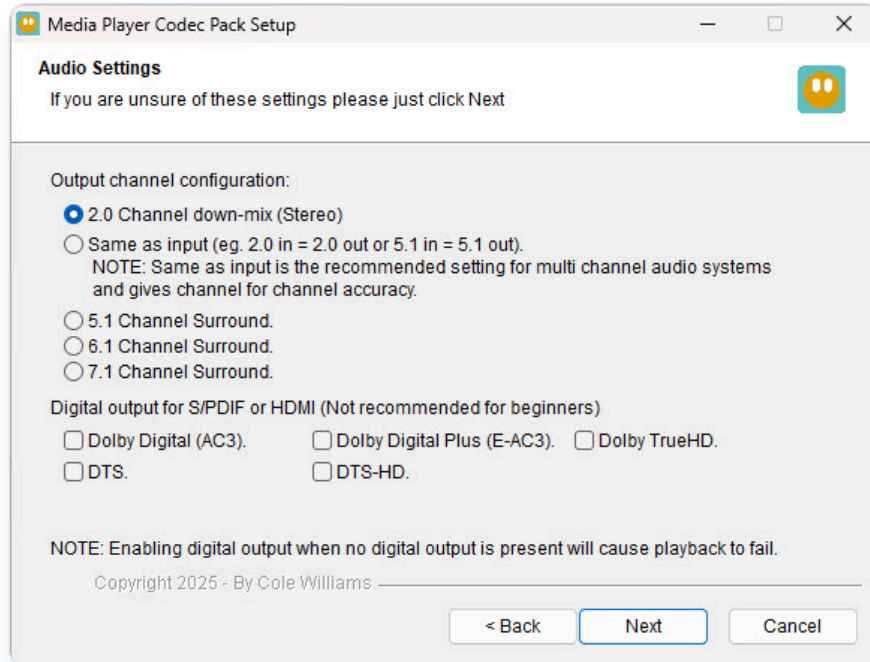
Transparency matters here: the component list is visible during setup, and further information is shown as different items are highlighted.

On systems using Detailed Installation, the installer checks the detected CPU and GPU and applies suitable default processing and acceleration options. This helps match playback settings to real hardware capabilities and codec limitations.



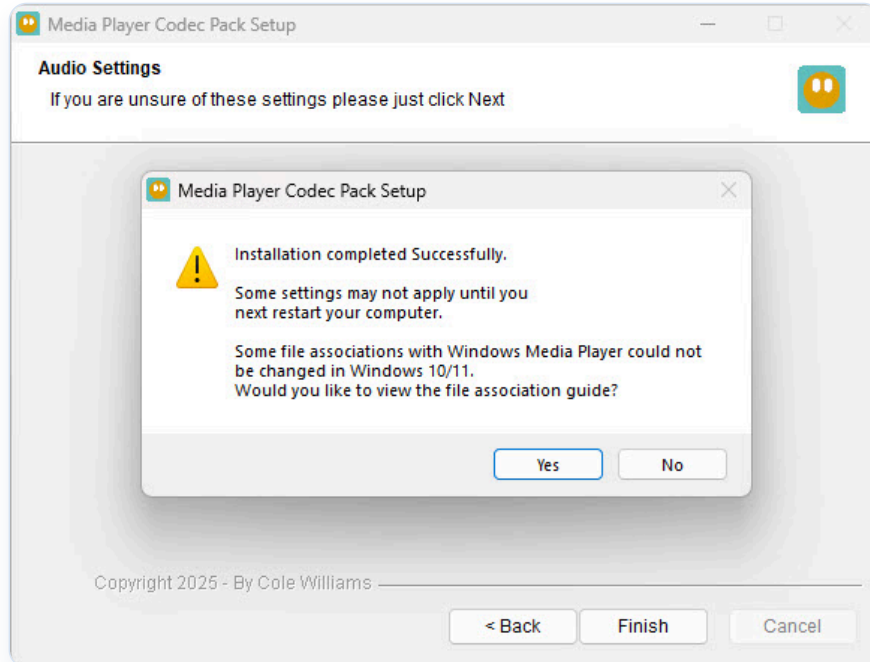
Why this matters: some graphics cards, acceleration modes, and codecs work better together than others. The installer uses system detection to start from sensible defaults.

Detailed Installation also includes audio output options such as stereo down-mix, surround sound layouts, and digital output where relevant. Most users can keep the recommended defaults.



Good default for most users: 2.0 channel down-mix is the straightforward choice unless your system is already set up for surround or digital audio output.

After installation completes, the setup confirms that it finished successfully. Some settings may not apply until after a restart, and on Windows 10 or 11 the installer may also offer to open the file association guide.



Quick recap

Run the downloaded installer

Choose Easy Installation or Detailed Installation

Accept the license agreement

Review the selected components

On Detailed Installation, review video and audio options

Finish the setup and restart if needed

Important installation notes

The installer is digitally signed.

Optional third-party software offers may appear in some cases and can be declined without affecting the codec pack installation.

Conflict blocking logic is used to reduce software conflicts and incompatible user selections.

An older version of the Media Player Codec Pack can be removed during setup when detected.

Frequently asked questions

What is the difference between Easy Installation and Detailed Installation?

Easy Installation is the simpler path and is suitable for most users. Detailed Installation gives more control and includes the extra video and audio settings screens.

Can I see what will be installed before continuing?

Yes. The installer shows the selected components during setup and provides extra component information as you browse the list.

Does the installer remove older versions of itself?

Yes. When an older version of the Media Player Codec Pack is detected, the installer can offer to uninstall it as part of the installation process.

How does the installer decide which video settings to use?

The installer checks the detected CPU and GPU and applies suitable defaults based on the system hardware and known codec or acceleration limitations.

Do I need to change the audio output settings manually?

Usually not. Most users can keep the recommended defaults. Detailed Installation simply provides the extra options for users who need stereo, surround, or digital audio output choices.

Can I decline optional third-party software offers?

Yes. Optional offers can be declined easily, and declining them has no impact on the rest of the Media Player Codec Pack installation.

Do I need to restart my computer after installation?

Sometimes. The final screen notes that some settings may not apply until after a restart, so restarting is recommended when prompted.